

# LTMWG944

## PRODUCT OVERVIEW

The LTMWG944 is a 9-cable antenna with 4x LTE, 4x WiFi6e and 1x GNSS. With 9-elements it provides a good match for the dual carrier modems that have two pairs of LTE MIMO elements, one pair for each carrier. These fleet management systems offer Cellular carrier back-up. The 4x WiFi elements provide faster through-put for advanced WiFi processors.

The LTMWG944 covers all Global Cellular & LTE frequencies such as CBRS, Private LTE, and 5-G ready. GNSS operates on GPS, Galileo, Glonass, QZSS or Beidou.

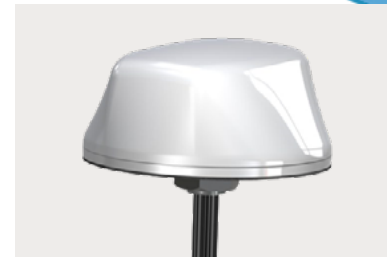
This Model is part of our Sub-6 and 5G Ready Solution known as our 626 line. It covers a wide frequency from 617 - 6000 MHz.

Specify LTMWG944 for a model configured with GPS only.

Visit our eStore to customize an Antenna Online.

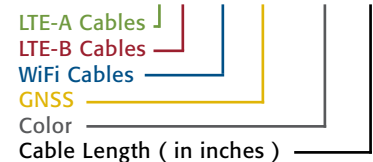
Electrical Specifications			
Frequency & Gain	LTE Cables 1 - 4	617 - 960 MHz, 2 dBi 1710 - 6000 MHz, 5 dBi	
	WiFi 6E Cables 5 - 8	2.4 - 2.5 & 4.9 - 7.125 GHz, 5 dBi	
	GNSS Cable 9	1561, 1575, & 1602 MHz, LNA 26 dB, 5 dBi ( RHCP )	
VSWR	LTE	< 2.5:1 VSWR over range ( with 12" LMR-100 )	
	WiFi	< 2:1 VSWR over range ( with 12" LMR-100 )	
Impedance	50 Ohm Nominal		
Power Rating	10 Watts		
GNSS	Amplifier Bias Voltage	2.7 to 5 VDC	
	Gain	26 dB +/- 3 dB	
	Current	20 mA max, 10 mA typical	

Mechanical Specifications			
Radome Material & Color	ASA UV-Inhibitive Plastic, Available in Black or White		
Radome Dimension	5.5" ( 13.9 cm ) in diameter 2.38" ( 6.0 cm ) in height		
1ft Pigtail Cables & Connectors Exiting Antenna	LTE	LMR-100 with SMA Plugs LTE-A ( Green ) & LTE-B ( Red )	
	WiFi	LMR-100 with SMA Plugs ( Blue )	
	GNSS	RG-174 with SMA Plug ( Yellow )	
Including 14ft Jumper Cables & Connectors	LTE	LL-195 with SMA Jack & SMA Plugs LTE-A ( Green ) & LTE-B ( Red )	
	WiFi	LL-195 with SMA Jack & Rev Pol SMA Plugs ( Blue )	
	GNSS	RG-174 with SMA Jack & SMA Plug ( Yellow )	
Operating Temperature	-40° to +80° C		
Mounting	7/8" Dia. Feed Through 3/4" Ig. Thread for up to 1/2" Thick Surface		
Shock & Vibration	IEEE1478, EN61373, MIL-810G, TIA 329.2-C		
Water Ingress	IP 67 ( When Properly Mounted )		



## MULTI-BAND ANTENNA

LTMWG944-A3CB3CW3JG2C-WHT-180



## HIGHLIGHTS:

- Multiband:  
4x LTE, 4x WiFi, 1x GNSS
- WiFi 6E Up to 7.125 GHz
- Dual-Carrier MIMO
- Covers 617 - 6000 MHz
- 1 ft Cable Pigtails Exit Antenna;  
14 ft Cable Jumpers Provided
- Color Coded Cable Type for  
EASY Match-Up
- Made-in-the-USA & UK

## RELATED MODELS:

- LTMWG943 ( 3x WiFi )
- LTMWG942 ( 2x WiFi )
- LTMWG941 ( 1x WiFi )
- LTMWG940 ( NO WiFi )
- LTMWG944 ( GPS Model )

## COMMON APPLICATIONS:

- Vehicle Fleet Management
- WiFi Data Transfer
- Multiband Modems
- Public Transportation



US Headquarters +1.847.671.6690  
US/CA Toll Free +1.800.648.2800  
European Facility +44.1543.459555

[www.MobileMark.com](http://www.MobileMark.com)