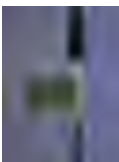




OD Dual Band Series



Universal Wall Mount  
4" Standoff



Wall Mount Bracket



Jumper Cables



Surge Arrestors

## OD Series Omni Antenna Dual Band Omni for GSM & CDMA

- Dual Band provides uniform 360° omni coverage
- 4 dBi gain for 850/900 MHz Bands, 5 dBi for 1.8/1.9 GHz bands
- Rugged field proven outdoor design for all applications (Cellular, EV-DO, 3G, Telemetry)
- Mounting kit includes all hardware needed for pole mount (up to 2 1/2" diameter pipe )

These new models in our OD Series line are optimized for GSM/CDMA networks, and provide dual band operation. With Omni coverage, these antennas provide an excellent option for building out portions of the networks, or for use as access/client nodes for EV-DO/3G data and telemetry.

These antenna are colinear arrays with elements stacked vertically. Our proven phasing techniques cancel out-of-phase current distribution. The result is improved system performance and high efficiency of transmitted power. This design maintains an omni pattern in the horizontal plane. The entire series of OD antennas require no ground plane for full performance.

The antennas are provided with offset bracket and the U Bolts for pole mounting. The U Bolts can accommodate up to a 2 1/2" outside diameter pole (63 mm). As an option, a variety of other mount brackets are available

The black fiberglass radome (1" diameter/25 mm) makes the antennas durable and rugged. They can withstand the harshest environments of snow, wind, rain and ice. The

feed assembly is made of precision machined aluminum components and is irriddited for weather protection. The antennas are supplied with U Bolts and offset bracket.

### Model Numbers

Model	Freq. (MHz)	Applications
OD-850/1900	824-894 MHz 1850-1990 MHz	US GSM/CDMA
OD-925/1800	870 -960 MHz 1710-1880 MHz	EU GSM/CDMA, and ISM 915 band

### Options

Options	Model
Jumper, 10 ft LMR-400 N Male	CA120400-XX
Jumper, 10 ft LMR-400, SMA Male	CA120400-XC
Jumper, 20 ft LMR-400 N Male	CA240400-XX
Jumper, 20 ft LMR-400 SMA Male	CA240400-XC
Wall Mount Bracket, Right Angle	OD-WMK
Wall Bracket, 4" Stand off	ACC-102643
Surge Arrestor, N Female	ACC-TW-LP-005N

Note: Some accessories may only be available from the US office, please consult factory.

### Specifications

#### Frequency & Gain:

824 - 960 MHz	4 dBi
1850 - 1990 MHz	5 dBi

**Bandwidth @2:1 VSWR:** See above

**Nominal Impedance:** 50 ohms

**Max. Power (continuous):** 25 watts

**Vertical Beamwidth (-3dB point):**  
850/900 MHz bands 35 degrees  
1800/1900 MHz Bands 22 degrees

**Wind Loading (flat plate equiv.):** 30 sq. inches (196 sq.cm)

**Rated Wind Velocity:** 125+ mph (200+ kph)

**Operating Temp:** -40° to +85° C

**Lightning Protection:** External suggested

**Antenna Diameter:** 1" (25 mm) main mast

**Antenna Termination:** N female connector

**Length/Weight:** 29.5 inches (61 cm)  
2.5 lbs (1.13 kg)

**Mounting Kit:** Mast mount kit included

**Mast Dimensions:** Fits mast up to 2 1/2" OD (63 mm outside diameter)

**Material:** Fiberglass radome with aluminum body

**Options:** Wall Mount Brackets, Surge Arrestors and jumper cables available

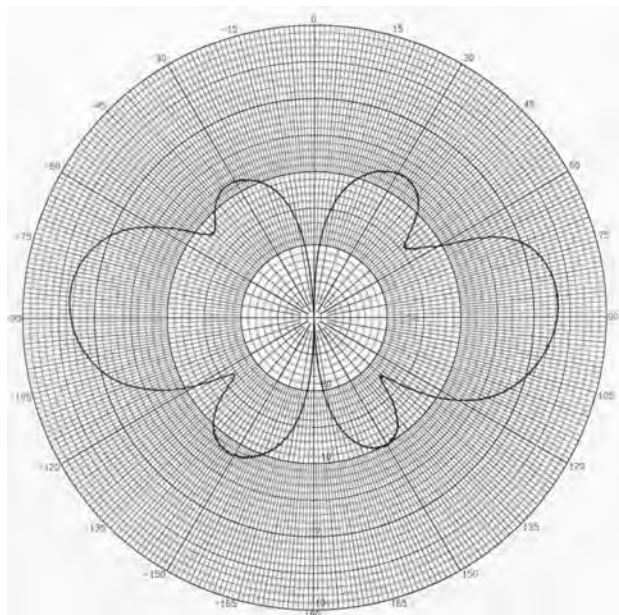
## OD-900/1900 Antenna

Omni Directional Dual Band Antenna

4 dBi, 824-894 MHz & 5 dBi, 1850-1990 MHz

US Cellular / PCS

OD @ 900 MHz– Elevation Plot



OD @ 1900 MHz– Elevation Plot

